

THE SPECIFICATIONS ARE SUBJECT TO CHANGE WITHOUT NOTICE. THE PICTURES MAY INCLUDE OPTIONS. THE ACTUAL COLOR & APPEARANCE OF THE PRODUCT MAY DIFFER FROM WHAT IS SHOWN.

Shandong Shantui Construction Machinery Imp. & Exp. Co.,Ltd

Add: 4th Floor, Shantui office Building, (Shantui Industry Park),

No.58 Highway G327, Jining City, Shandong Province, China

Tel: +86-537-2909368

Fax: +86-537-2311219

Mail: trade@shantui.com



www.shantui.com

SHANTUI

HAND-GUIDED SINGLE DRUM VIBRATORY ROLLERS

SR300L SR500L

HAND-GUIDED DOUBLE DRUM VIBRATORY ROLLERS

SRD500L SRD600L SRD800L

REMOTE CONTROL DOUBLE DRUM VIBRATORY ROLLERS

SRD016W SRD900W

LIGHT TANDEM ROLLER

SRD800 / SRD900 / SRD900H / SRD017 / SRK017 / SRD03 / SRK03 / SRD04 / SRK04



HAND-GUIDED SINGLE DRUM VIBRATORY ROLLER SR300L

This SR300L light model stands out with easy handling in confined space .



LIGHT ROLLER SERIES



World leading hydrostatic driving system guarantees stepless speed control to achieve outstanding compaction result



All function integrated in steering rod head



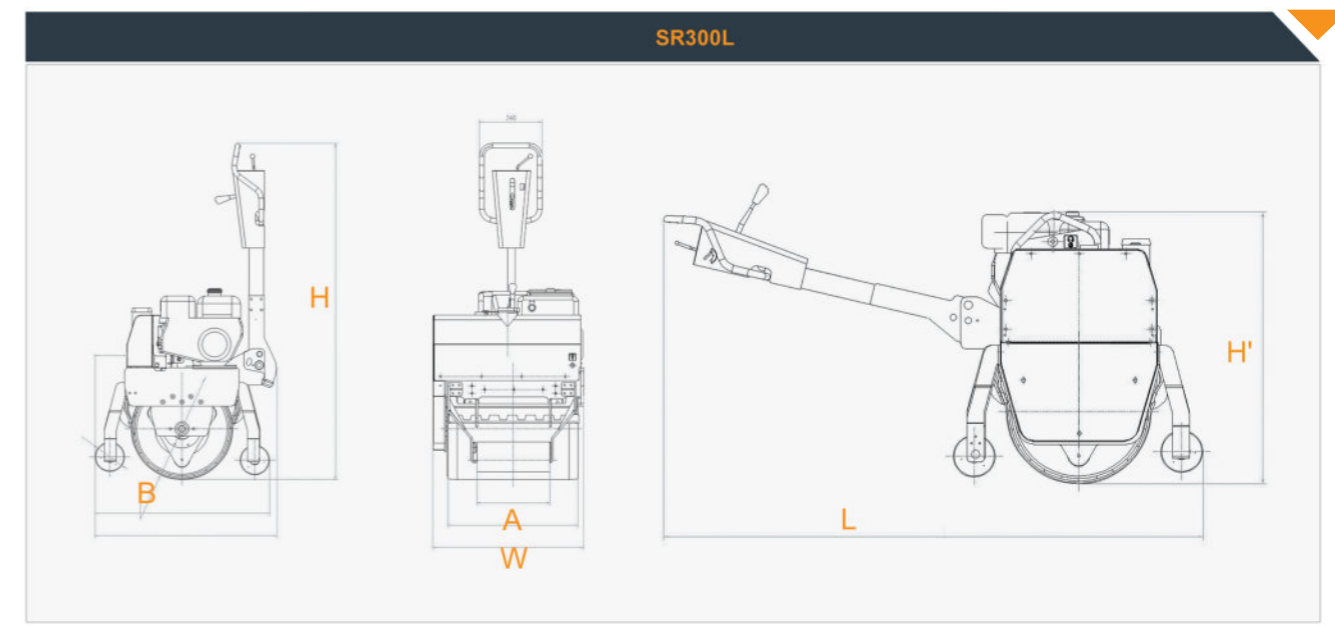
Steel wheel set provide support for stability during operation



Water sprinkler system with durable stainless steel pipe

Technical Specifications

		SR300L	
Weight			
Operating weight	292kg		
Driving characteristic			
Speed	0-2.8km/h (Forward and Reverse)		
Gradeability	30%		
Drive	Hydraulic drive		
Engine	Diesel engine	Gasoline engine	
Model	170F	B&S 130G	
Type	Diesel engine, air cooled, 4 stroke, vertical type, single cylinder	Gasoline engine, air cooled, 4 stroke, OHV, single cylinder	
Power	4hp/3600rpm	6.5hp/3600rpm	
Compaction	130L		
Vibration	Mechanical drive		
Static load	45N/cm		
Nominal amplitude	0.6mm		
Vibration frequency	70Hz		
Exciting force	15kN		
Tank capacities	Diesel engine	Gasoline engine	
Fuel	2.5L	3.1L	
water	15L		



DIMENSION		SR300L	
Wheelbase	A	600mm	
Width of steel wheel(Forward and Reverse)	B	450mm	
Total length	L	1420mm	
Total width	W	750mm	
Total height	H	1100mm	
Packing size	1050x900x1200mm		

www.shantui.com

HAND-GUIDED SINGLE DRUM VIBRATORY ROLLER SR500L

The SR500L is ideal for asphalt repair and maintenance applications



LIGHT ROLLER SERIES



World leading hydrostatic driving system guarantees stepless speed control to achieve outstanding compaction result



All function integrated in steering rod head



Steel wheel set provide support for stability during operation

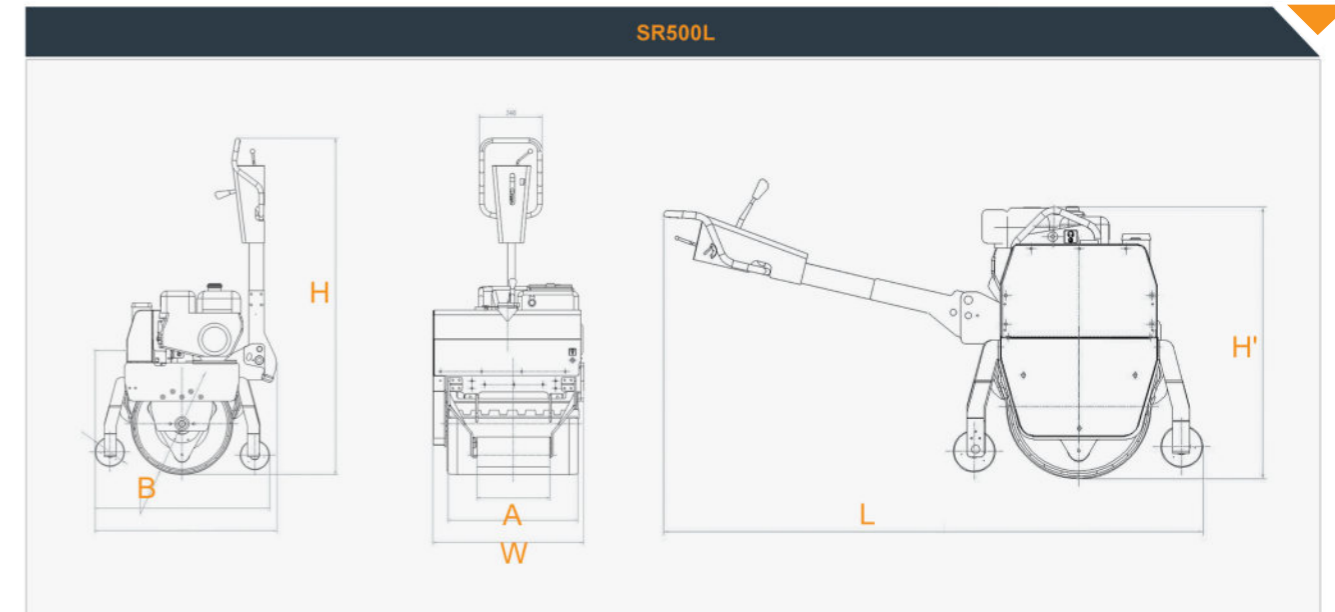


Water sprinkler system with durable stainless steel pipe

Technical Specifications

SHANTUI
VALUE THAT WORKS

		SR500L	
Weight			
Operating weight	542kg		
Driving characteristic			
Speed	0-3km/h(Forward and Reverse)		
Gradeability	30%		
Drive	Hydraulic drive		
Engine	Diesel engine	Gasoline engine	
Model	178F	B&S 25T2	
Type	Diesel engine, air cooled, 4 stroke, vertical type, single cylinder	Gasoline engine, air cooled, 4 stroke, OHV, single cylinder	
Power	6.0hp/3600rpm	13.5hp/3600rpm	
Compaction			
Vibration	Mechanical drive		
Static load	65N/cm		
Nominal amplitude	0.5mm		
Vibration frequency	70Hz		
Exciting force	16kN		
Tank capacities	Diesel engine	Gasoline engine	
Fuel	3L	10L	
water	20L		



DIMENSION		SR500L	
Wheelbase	A	715mm	
Width of steel wheel(Forward and Reverse)	B	560mm	
Total length	L	2145mm	
Total width	W	840mm	
Total height	H	1820mm	
Packing size		1150x950x2000mm	

www.shantui.com

HAND-GUIDED DOUBLE DRUM VIBRATORY ROLLER

SRD500L
SRD600L



LIGHT ROLLER SERIES



World leading hydrostatic driving system guarantees stepless speed control to achieve outstanding compaction result



Hinged rod offers easy operation during transportation



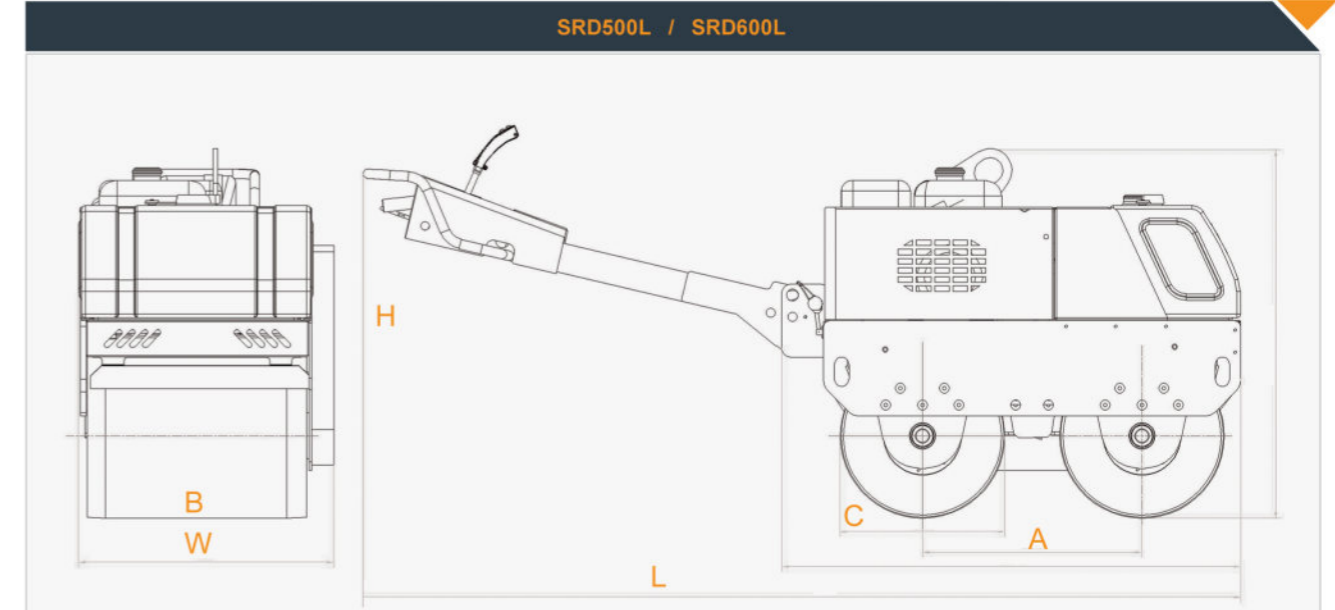
All function integrated in steering rod head



Robust plastic water tank are fitted to prevent rust in sprinkling system

Technical Specifications

	SRD500L		SRD600L	
Weight				
Operating weight	570kg		583kg	
Driving characteristic				
Speed	0.9km/h, 1.5km/h (Forward and Reverse)		0-3km/h(Forward and Reverse)	
Gradeability	30%		30%	
Drive	Hydraulic drive		Hydraulic drive	
Engine	Diesel engine	Gasoline engine	Diesel engine	Gasoline engine
Model	178F	B&S, 19N	178F	B&S 25T2
Type	Diesel engine, air-cooled, 4 stroke, single cylinder	Gasoline engine, air cooled, 4 stroke, OHV, single cylinder	Diesel engine, air-cooled, 4 stroke, single cylinder	Gasoline engine, air cooled, 4 stroke, OHV, single cylinder
Power	6.0hp/3600rpm	9.0hp/3600rpm	6.0hp/3600rpm	13.5hp/3600rpm
Compaction				
Vibration	Mechanical drive			
Static load	37.3/40.3N/cm		45/50N/cm	
Nominal amplitude	0.6mm		0.6mm	
Vibration frequency	70Hz		70Hz	
Exciting force	13.5kN		15kN	
Tank capacities	Diesel engine	Gasoline engine	Diesel engine	Gasoline engine
Fuel	3.5L	6L	3.5L	10L
water	30L		50L	



DIMENSION		SRD500L	SRD600L
Wheelbase	A	600mm	600mm
Width of steel wheel(Forward and Reverse)	B	600mm	600mm
Diameter of steel wheel(Forward and Reverse)	C	450mm	450mm
Total length	L	2460mm	2460mm
Total width	W	700mm	700mm
Total height	H	1800mm	1800mm
Packing size		1460x810x1230mm	1460x810x1230mm

www.shantui.com

HAND-GUIDED DOUBLE DRUM VIBRATORY ROLLER

SRD800L

This heavy-duty hand-guided model is ideal for asphalt construction and earthworks



LIGHT ROLLER SERIES



World leading hydrostatic driving system guarantees stepless speed control to achieve outstanding compaction result



American brand double drive motor



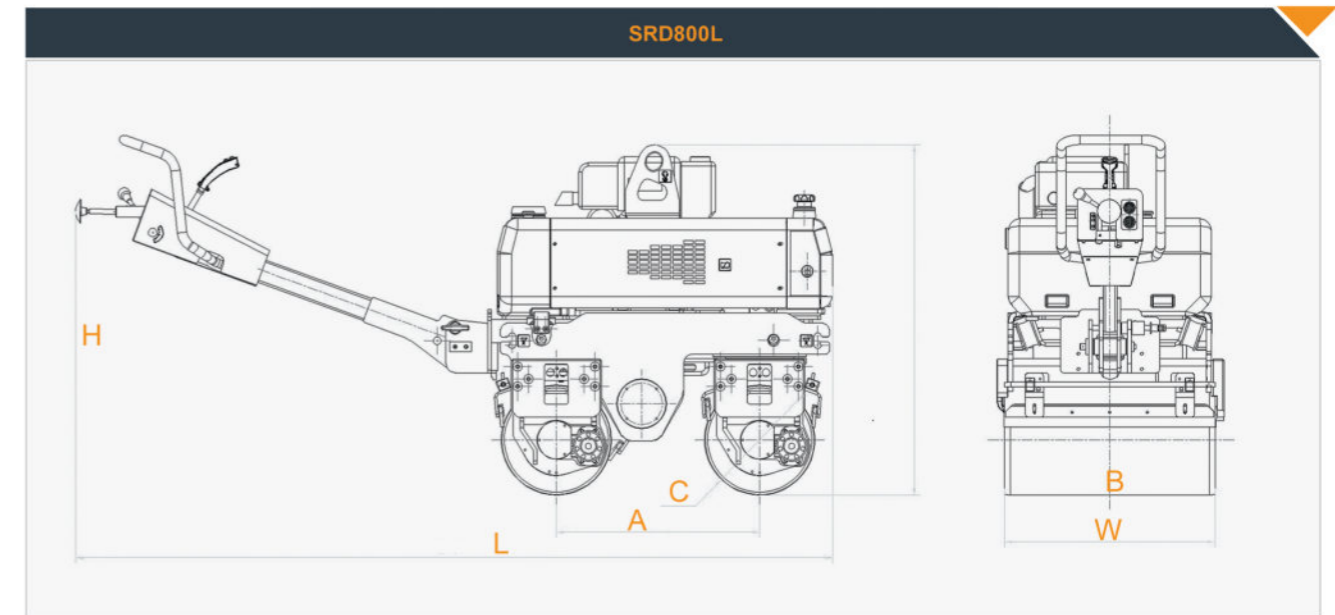
Hydraulic steering system offers easy operation



All function integrated in steering rod head

Technical Specifications

		SRD800L	
Weight			
Operating weight		860kg	
Driving characteristic			
Speed		0-3.5km/h (Forward and Reverse)	
Turning angle		15°	
Gradeability		30%	
Drive		Hydraulic drive	
Engine		Diesel engine	Gasoline engine
Model		186F	B&S 25T2
Type		Diesel engine, air cooled, 4 stroke, vertical type, single cylinder	Gasoline engine, air cooled, 4 stroke, OHV, single cylinder
Power		8.0hp/3600rpm	13.5hp/3600rpm
Compaction			
Vibration		Mechanical drive	
Static load		60/65N/cm	
Nominal amplitude		0.5mm	
Vibration frequency		65Hz	
Exciting force		17kN	
Tank capacities		Diesel engine	Gasoline engine
Fuel		3.5L	10L
water		38L	



DIMENSION		SRD800L	
Wheelbase	A	650mm	
Width of steel wheel(Forward and Reverse)	B	680mm	
Diameter of steel wheel(Forward and Reverse)	C	355mm	
Total length	L	2460mm	
Total width	W	732mm	
Total height	H	1800mm	
Packing size		1460x830x1910mm	

www.shantui.com

REMOTE CONTROL DOUBLE DRUM VIBRATORY ROLLER

SRD016W
SRD900W



LIGHT ROLLER SERIES



World leading hydrostatic driving system guarantees stepless speed control to achieve outstanding compaction result



Reliable radio remote control eliminates problems caused by intense light or the simultaneous use of other machines



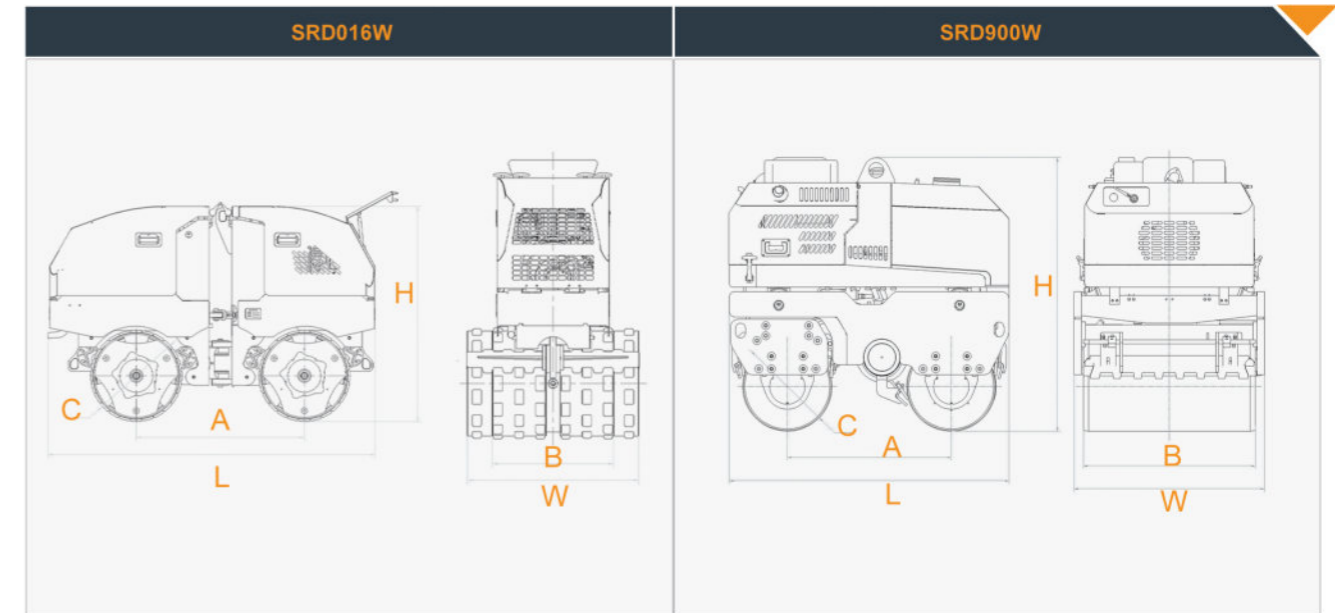
Multi-purpose compactor achieves outstanding compaction result at various site condition, compaction in trenches, sewers or pipeline construction



The working width can be easily changed between 600 and 850mm with the drum extension

Technical Specifications

	SRD016W		SRD900W	
Weight				
Operating weight	1635kg		870kg	
Driving characteristic				
Speed	1.2km/h(low) 2.4km/h(high)		1.2km/h(low), 3.6km/h(high)	
Turning angle	15°		15°	
Gradeability	50%		30%	
Drive	Hydraulic drive		Hydraulic drive	
Driven Drum	Front+Rear		Front+Rear	
Engine	Diesel engine	Gasoline engine	Diesel engine	Gasoline engine
Model	Yanmar 3TNV76 Yanmar 3TNV80(T4F)	HONDA, GX630	186F	B&S 25T2
Type	Diesel engine, water-cooled, 4 stroke, triple cylinder	Gasoline engine, air cooled, 4 stroke, OHV, double cylinder	Diesel engine, air-cooled, 4 stroke, single cylinder	Gasoline engine, air cooled, 4 stroke, OHV, single cylinder
Power	25hp/3200rpm 23hp/3000rpm	20.0hp/2800rpm	8.0hp/3600rpm	13.5hp/3600rpm
Compaction				
Vibration	Hydraulic drive			
Static load	98/90N/cm		52/54N/cm	
Nominal amplitude	1.7mm		0.5mm	
Vibration frequency	42Hz		60Hz	
Exciting force	70kN/35kN		20kN	
Tank capacities	Diesel engine	Gasoline engine	Diesel engine	Gasoline engine
Fuel	30L	30L	5.5L	6.5L



DIMENSION		SRD016W	SRD900W
Wheelbase	A	1420mm	650mm
Width of steel wheel(Foward and Reverse)	B	850mm	680mm
Diameter of steel wheel(Foward and Reverse)	C	520mm	355mm
Total length	L	1900mm	1120mm
Total width	W	980mm	680mm
Total height	H	1300mm	1110mm
Packing size		2030x950x1460mm	1245x865x1252mm

LIGHT TANDEM ROLLER

SRD800

single hydraulic drive
mechanical steering
mechanical vibrating



World leading hydrostatic driving system guarantees stepless speed control to achieve outstanding compaction result



Single drive hydraulic motor offers high efficiency and economical performance



Robust plastic water tank are fitted to prevent rust in sprinkling system

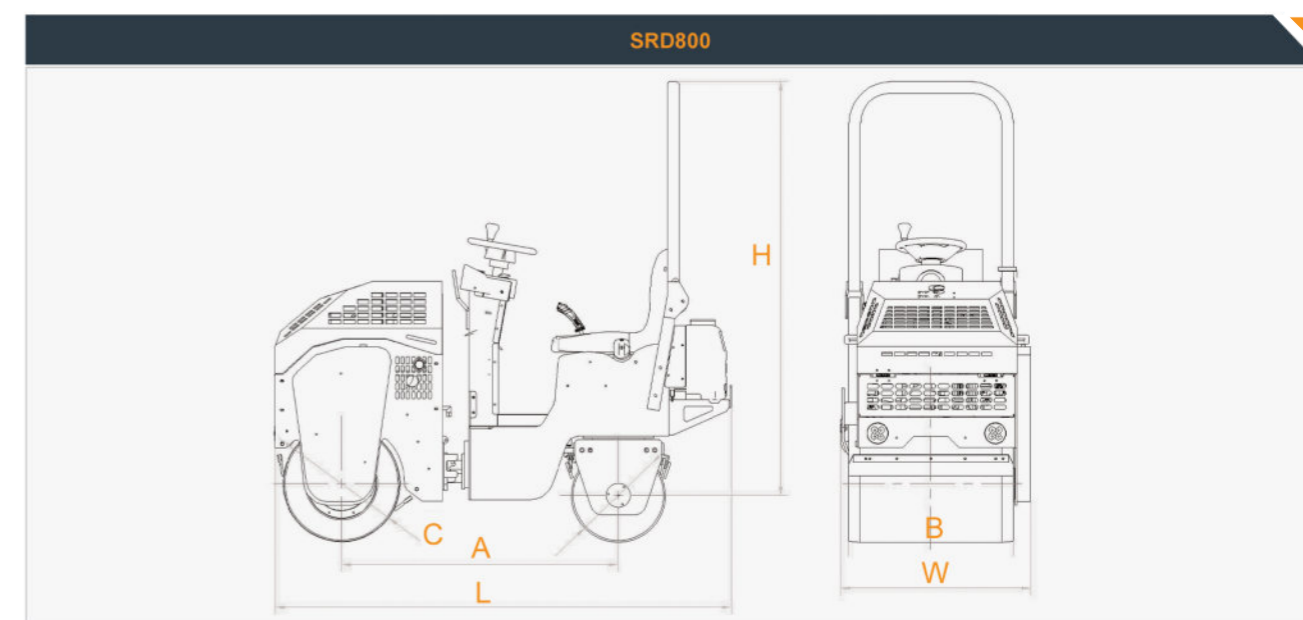


Lifting point is located at the centre position, simplifying the loading and off loading

Technical Specifications

SHANTUI
VALUE THAT WORKS

	SRD800	
Weight		
Operating weight	790kg	
Driving characteristic		
Speed	0-3.5km/h	
Turning radius	1500mm	
Gradeability	25%	
Drive	Single hydraulic drive	
Engine	Diesel engine	Gasoline engine
Model	186F	B&S 25T2
Type	Diesel engine, air cooled, 4 stroke, vertical type, single cylinder	Gasoline engine, air cooled, 4 stroke, OHV, single cylinder
Power	8.0hp/3600rpm	13.5hp/3600rpm
Compaction	130L	
Vibration	Mechanical drive	
Static load	62/78N/cm	
Nominal amplitude	0.5mm	
Vibration frequency	70Hz	
Exciting force	20kN	
Tank capacities	Diesel engine	Gasoline engine
Fuel	10L	10L
water	38L	



DIMENSION		SRD800
Wheelbase	A	1180mm
Width of steel wheel(Forward and Reverse)	B	700/540mm
Diameter of steel wheel(Forward and Reverse)	C	500/400mm
Total length	L	1930mm
Total width	W	800mm
Total height	H	1750mm
Packing size		2110x980x1610mm

LIGHT TANDEM ROLLER

SRD900 SRD900H

double hydraulic drive
hydraulic steering
SR900 mechanical vibrating
SRD900H Hydraulic vibrating



World leading hydrostatic driving system guarantees stepless speed control to achieve outstanding compaction result



Lifting point is located at the centre position, simplifying the loading and off loading



Robust plastic water tank are fitted to prevent rust in sprinkling system



SRD900H is equipped with Danfoss hydraulic vibrating motor



Danfoss double drive hydraulic motor



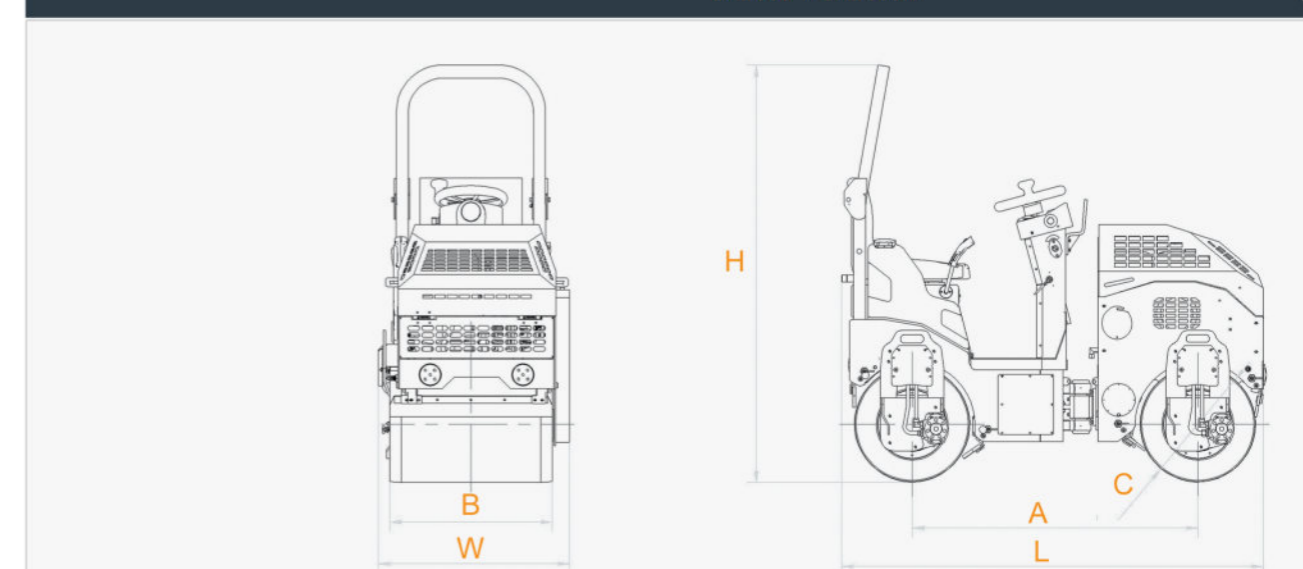
All function integrated in joystick for easy operation

Technical Specifications

SHANTUI
VALUE THAT WORKS

	SRD900	SRD900H
Weight		
Operating weight	920kg	
Driving characteristic		
Speed	0-4km/h	
Turning radius	2600mm	
Gradeability	30%	
Drive	Double hydraulic drive	
Engine	Diesel engine	Gasoline engine
Model	186F	B&S 25T2
Type	Diesel engine, air cooled, 4 stroke, vertical type, single cylinder	Gasoline engine, air cooled, 4 stroke, OHV, single cylinder
Power	8.0hp/3600rpm	13.5hp/3600rpm
Compaction		
Vibration	Mechanical drive	Hydraulic drive
Static load	57/77N/cm	
Nominal amplitude	0.5mm	
Vibration frequency	70Hz	
Exciting force	20kN	
Tank capacities	Diesel engine	Gasoline engine
Fuel	10L	10L
Water	67L	

SRD900 / SRD900H



DIMENSION	SRD900/ SRD900H	
Wheelbase	A	1230mm
Width of steel wheel(Forward and Reverse)	B	700mm
Diameter of steel wheel(Forward and Reverse)	C	500mm
Total length	L	1810mm
Total width	W	830mm
Total height	H	1990mm
Packing size	2110x980x1610mm	

LIGHT TANDEM ROLLER

SRD017
SRK017



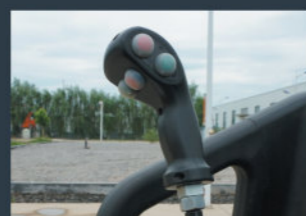
World leading hydrostatic driving system guarantees stepless speed control to achieve outstanding compaction result



Danfoss hydraulic vibrating motor



Robust plastic water tank are fitted to prevent rust in sprinkling system



All function integrated in joystick for easy operation



Danfoss double drive hydraulic motor



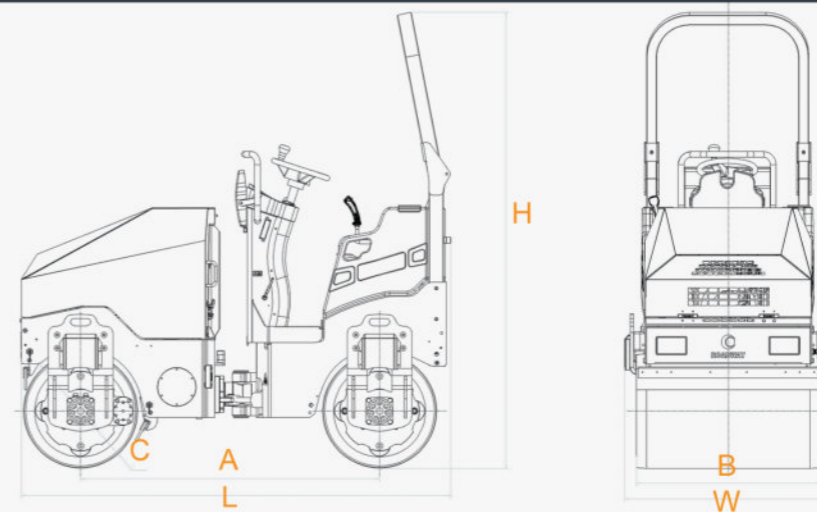
Pressure sprinkler with high quality pump , interval spray system Wind-protected nozzles are easily accessible

Technical Specifications

SHANTUI
VALUE THAT WORKS

	SRD017		SRK017
Weight			
Operating weight	1700kg		
Driving characteristic			
Speed	0-8km/h		
Turning radius	1900mm		
Gradeability	30%		
Drive	Double hydraulic drive		
Driven Drum	Front+Rear		
Engine	Diesel engine		Gasoline engine
Model	Yanmar 3TNV76	Yanmar 3TNV74(T4F)	HONDA, GX630
Type	Diesel engine, water-cooled, 4 stroke, triple cylinder		Gasoline engine, air cooled, 4 stroke, OHV, double cylinder
Power	25hp/3200rpm	20hp/3000rpm	20hp/2800rpm
Compaction			
Vibration	Hydraulic drive		
Static load	80/85N/cm		79N/cm(front)
Nominal amplitude	0.5mm		
Vibration frequency	65Hz		
Exciting force	25kN		
Tank capacities	Diesel engine		Gasoline engine
Fuel			30L
Water			150L

SRD017 / SRK017



DIMENSION		SRD017	SRK017
Wheel base	A	1520mm	1535mm
Width of steel wheel	B	900mm	1000mm
Diameter of steel wheel	C	560mm	620mm
Total length	L	2140mm	2450mm
Total width	W	980mm	1100mm
Total height	H	2230mm	2230mm
Tire size		/	205/60-15
Tire diameter		/	630
Packing size		2340×1140×1820mm	2500×1200×1800mm

LIGHT TANDEM ROLLER

SRD03 SRK03



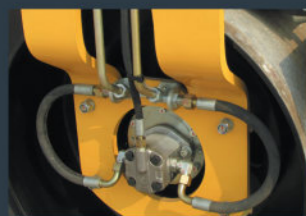
LIGHT ROLLER SERIES



World leading hydrostatic driving system guarantees stepless speed control to achieve outstanding compaction result



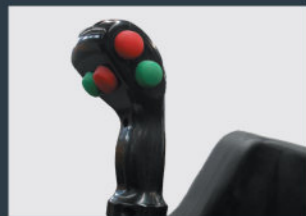
Pressure sprinkler with high quality pump , interval spray system Wind-protected nozzles are easily accessible



Sauer double vibrating hydraulic motor



Large operation platform ensure a pleasant workday



All function integrated in joystick for easy operation

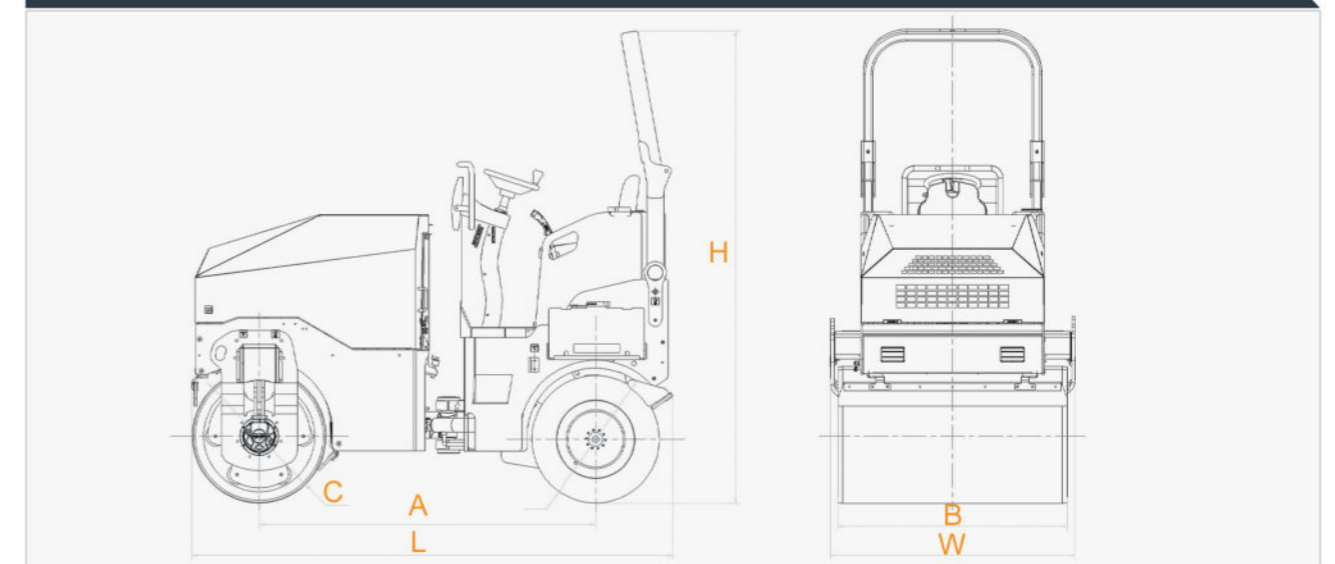


Robust plastic water tank are fitted to prevent rust in sprinkling system

Technical Specifications

	SRD03	SRK03
Weight		
Operating weight	2900kg	
Driving characteristic		
Speed	0-12km/h	
Turning radius	2600mm	
Gradeability	40%	
Drive	Double hydraulic drive	
Engine		
Model	Yanmar 3TNV88	
Type	Diesel engine, water-cooled, 4 stroke, triple cylinder	
Power	26.9kW/3000rpm	
Compaction		
Vibration	Hydraulic drive	
Static load	118/110N/cm	125N/cm(front)
Nominal amplitude	0.5mm	
Vibration frequency	60Hz	
Exciting force	30kN	
Tank capacities		
Fuel	40L	
Water	200L	

SRD03 / SRK03



DIMENSION		SRD03	SRK03
Wheel base	A	1760mm	1760mm
Width of steel wheel	B	1200mm	1200mm
Diameter of steel wheel	C	700mm	700mm
Total length	L	2495mm	2495mm
Total width	W	1310mm	1310mm
Total height	H	2440mm	2440mm
Tire size		/	9.5/65-15
Tire diameter		/	670
Packing size		2800×1450×2100mm	2800×14650×1950mm

www.shantui.com

LIGHT TANDEM ROLLER

SRD04
SRK04



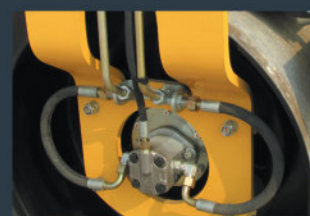
LIGHT ROLLER SERIES



World leading hydrostatic driving system guarantees stepless speed control to achieve outstanding compaction result



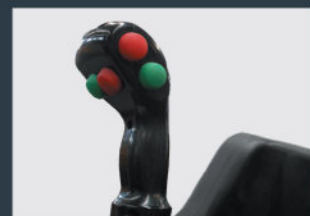
Pressure sprinkler with high quality pump , interval spray system Wind-protected nozzles are easily accessible



Sauer double vibrating hydraulic motor



Large operation platform ensure a pleasant workday



All function integrated in joystick for easy operation



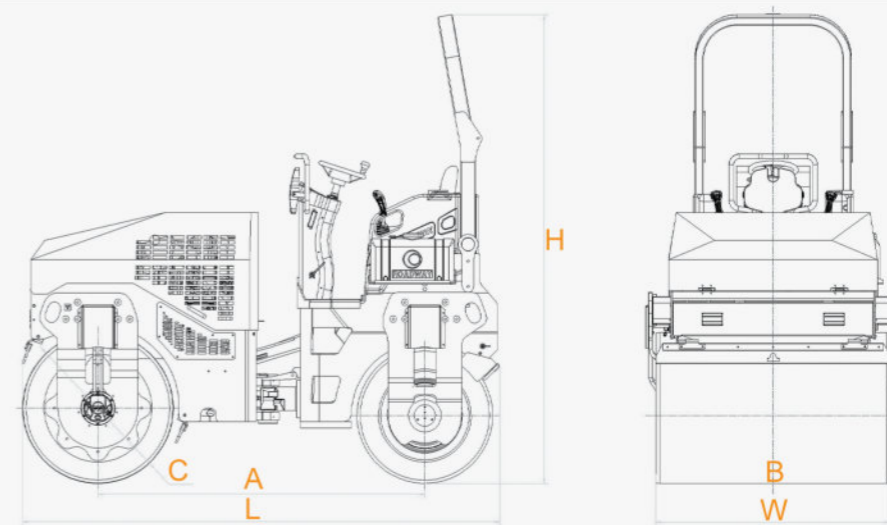
Robust plastic water tank are fitted to prevent rust in sprinkling system

SHANTUI
VALUE THAT WORKS

Technical Specifications

	SRD04	SRK04
Weight		
Operating weight	4200kg	4000kg
Driving characteristic		
Speed	0-12km/h	
Turning radius	3000mm	
Gradeability	40%	
Drive	Double hydraulic drive	
Engine		
Model	Perkins 404D-22T	
Type	Diesel engine, water-cooled, 4 stroke, four cylinder	
Power	44.7kW/2800rpm	
Compaction	SRD04	SRK04
Vibration	Hydraulic drive	
Static load	150/135.5N/cm	150N/cm(front)
Nominal amplitude	0.5mm	
Vibration frequency	60Hz	
Exciting force	40kN	
Tank capacities		
Fuel	70L	
Water	200L	

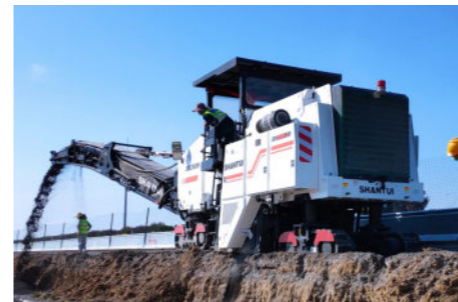
SRD04 / SRK04



DIMENSION		SRD04	SRK04
Wheel base	A	1950mm	1950mm
Width of steel wheel	B	1400mm	1400mm
Diameter of steel wheel	C	900mm	900mm
Total length	L	2850mm	2850mm
Total width	W	1520mm	1520mm
Total height	H	2700mm	2700mm
Tire size		/	10.5/80-16
Tire diameter		/	790mm
Packing size		3000×1670×2200mm	3000×1670×2200mm

www.shantui.com

GROUP PRODUCTS



* THE SPECIFICATIONS ARE SUBJECT TO CHANGE WITHOUT NOTICE. THE PICTURES MAY INCLUDE OPTIONS. THE ACTUAL COLOR & APPEARANCE OF THE PRODUCT MAY DIFFER FROM WHAT IS SHOWN.